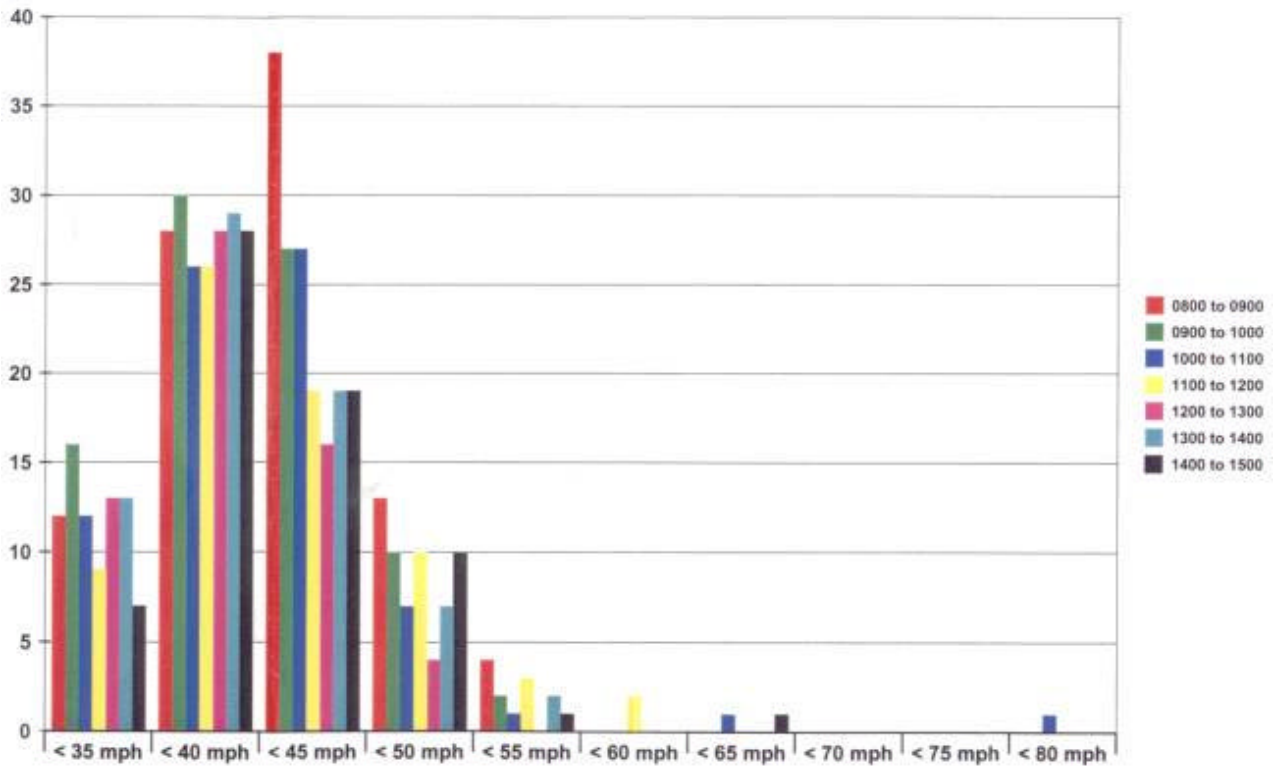




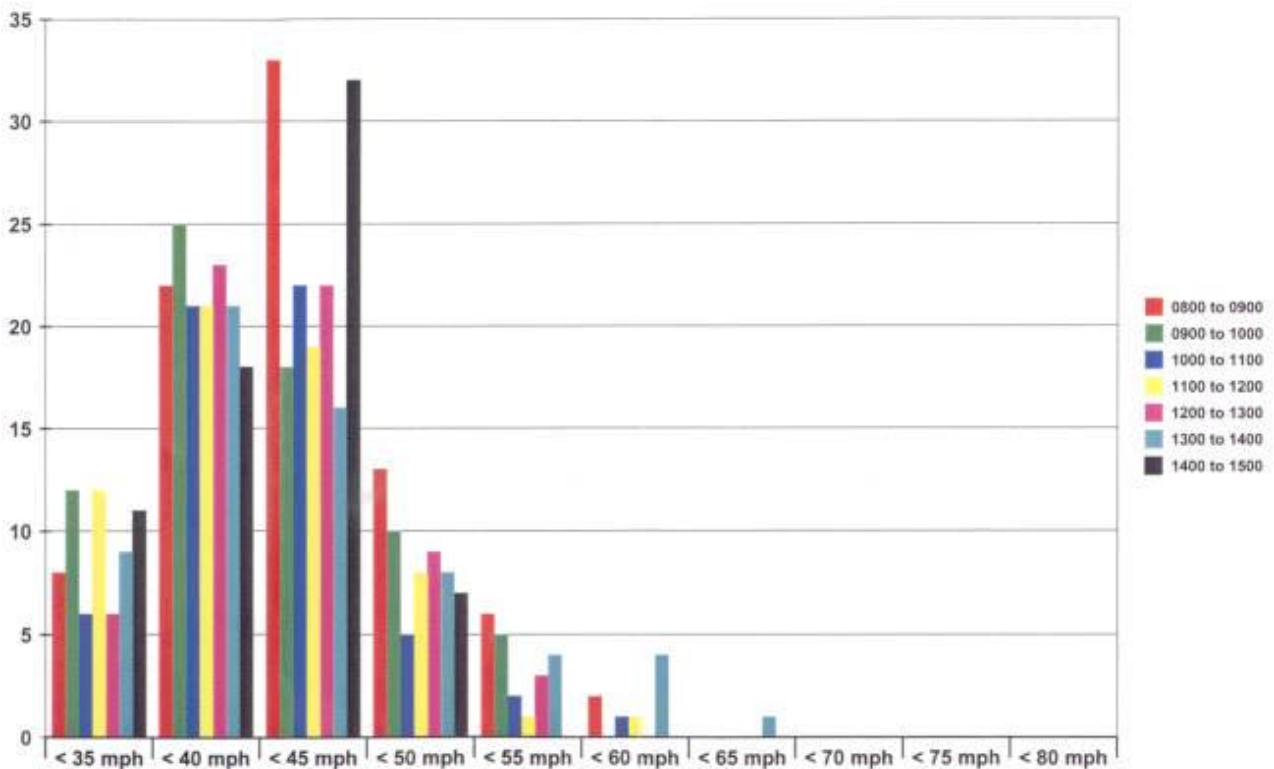
The graphics below show the [speed of drivers](#) along Lyndhurst Road between 8:00am and 3:00pm on 25th/26th March 2003. The speed recording device was positioned in the vicinity of the bakery facing in alternate directions on consecutive days. Download a printable copy

B.3079 Lyndhurst Road, Landford. Vehicles towards Salisbury.



Wednesday 26th March 2003

B.3079 Lyndhurst Road, Landford. Vehicles towards Lyndhurst



Tuesday 25th March 2003

**B3079 Lyndhurst Road - Vehicles towards Salisbury
Wednesday, 26th March 2003, 8:00am - 3:00pm**

Time	<35mph	<40mph	<45mph	<50mph	<55mph	<60mph	<65mph	<70mph	<75mph	<80mph	
8-9am	12	28	38	13	4						
9-10am	16	30	27	10	2						
10-11am	12	26	27	7	1		1			1	
11-12pm	9	26	19	10	3	2					
12-1pm	13	28	16	4							
1-2pm	13	29	19	7	2						
2-3pm	7	28	19	10	1		1				
Total No Cars = 554				Average Speed = 38mph				85% within 45mph			

**B3079 Lyndhurst Road - Vehicles towards Lyndhurst
Tuesday, 25th March 2003, 8:00am - 3:00pm**

Time	<35mph	<40mph	<45mph	<50mph	<55mph	<60mph	<65mph	<70mph	<75mph	<80mph	
8-9am	8	22	33	13	6	2					
9-10am	12	25	18	10	5						
10-11am	6	21	22	5	2	1					
11-12pm	12	21	19	8	1	1					
12-1pm	6	23	22	9	3						
1-2pm	9	21	16	8	4	4	1				
2-3pm	11	8	32	7							
Total No Cars = 499				Average Speed = 38mph				85% within 45mph			

Data provided by the Wiltshire Highways Partnership